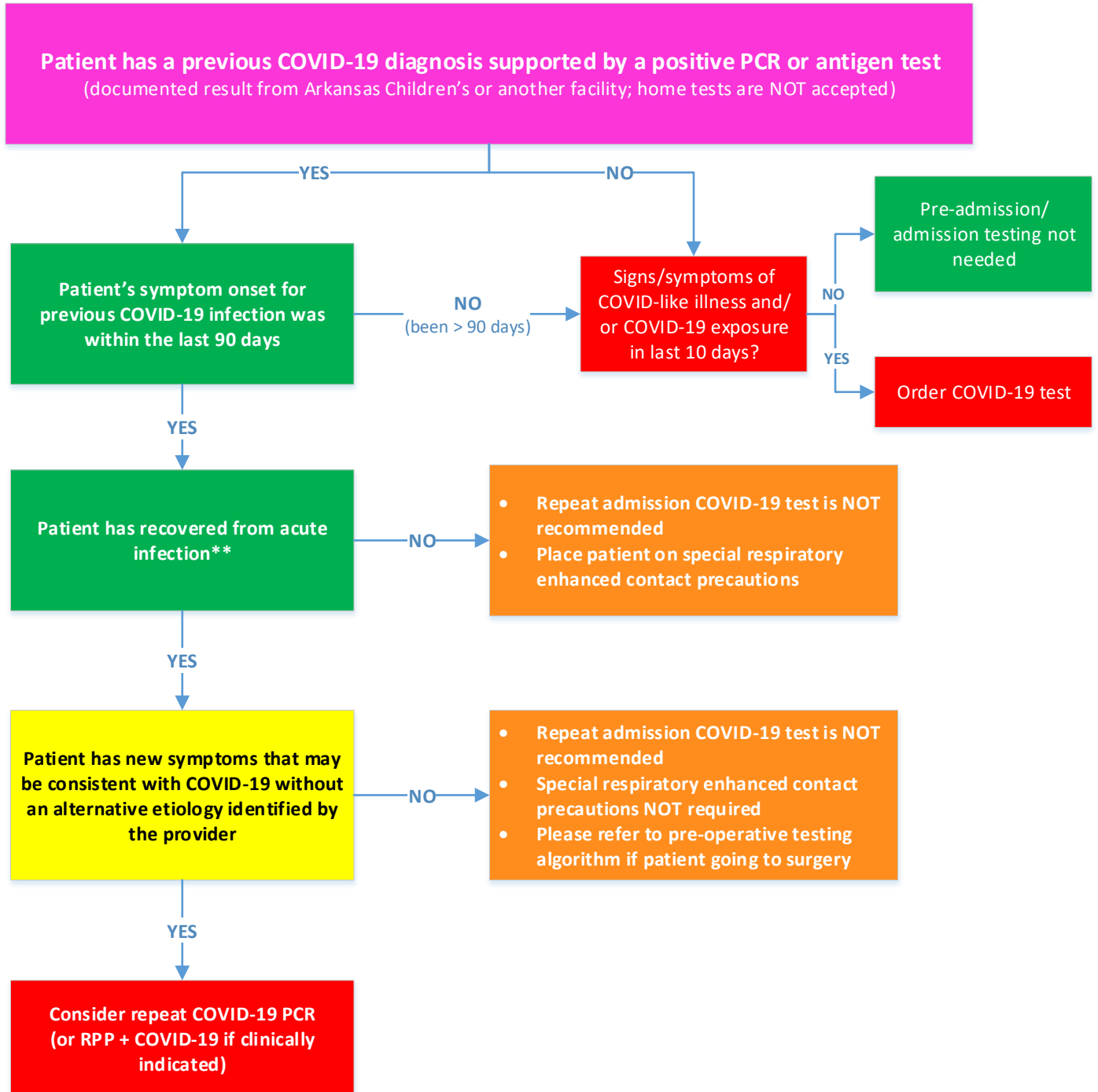


ACNW COVID-19 Pre-Admission Testing Inpatient Areas

This pathway is intended as a guide for staff/providers and is not intended to replace clinical judgement.
Students refer to educational institution guidelines for caring for COVID positive patients



*If patient was asymptomatic at time of diagnosis, date of first positive PCR test should be used in place of the date for symptom onset

Recovery = 10 days from symptom onset* for persons with mild infection or 20 days from symptom onset* for persons admitted with COVID-19 infection or immunocompromised persons **AND resolution of fever for at least 24 hours (without antipyretic) **AND** improvement of symptoms

ACNW COVID-19 Pathway Inpatient Areas

This pathway is intended as a guide for staff/providers and is not intended to replace clinical judgement.
Students refer to educational institution guidelines for caring for COVID positive patients

