

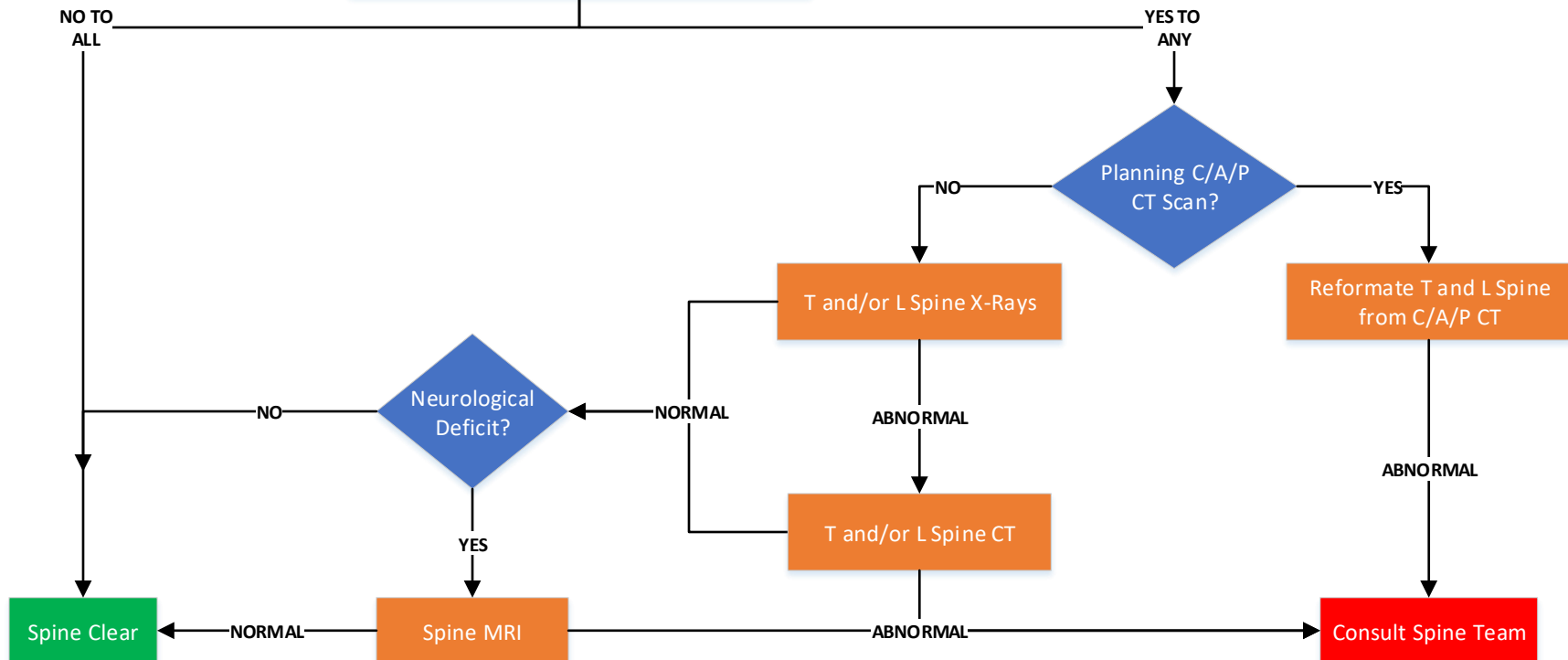
ACH Trauma T/L-Spine Clearance

Disclaimer: This clinical pathway is provided as a general guideline for use by Licensed Independent Provider's (LIPs) in planning care and treatment of patients. It is not intended to be and does not establish a standard of care. Each patient's care is individualized according to specific needs.

- Isolated transverse process fractures:**
- No spine consult necessary regardless of location, displacement, or number
 - CTA of the neck should be performed if foramen transversarium is involved. Consult neurosurgery if CTA shows vascular injury. No consult necessary if CTA is normal.
- Isolated spinous process fractures:**
- Consult spine service for any spinous process fractures of C2-T1
 - No spine consult necessary for spinous process fractures of T2 and below regardless of number or displacement

- Does the patient have any of the following:
- Altered LOC
 - Neurological deficit
 - Midline tenderness
 - T/L – Spine Pain
 - C – Spine Injury
 - Distracting Injury
 - Intoxication

- Concern for spinal cord injury warrants immediate spine team consult
- Spinal cord injury warrants emergent MRI
- Nerve root injury warrants urgent MRI



Revision Notes

- Trauma Council Approval: 9-1-2020