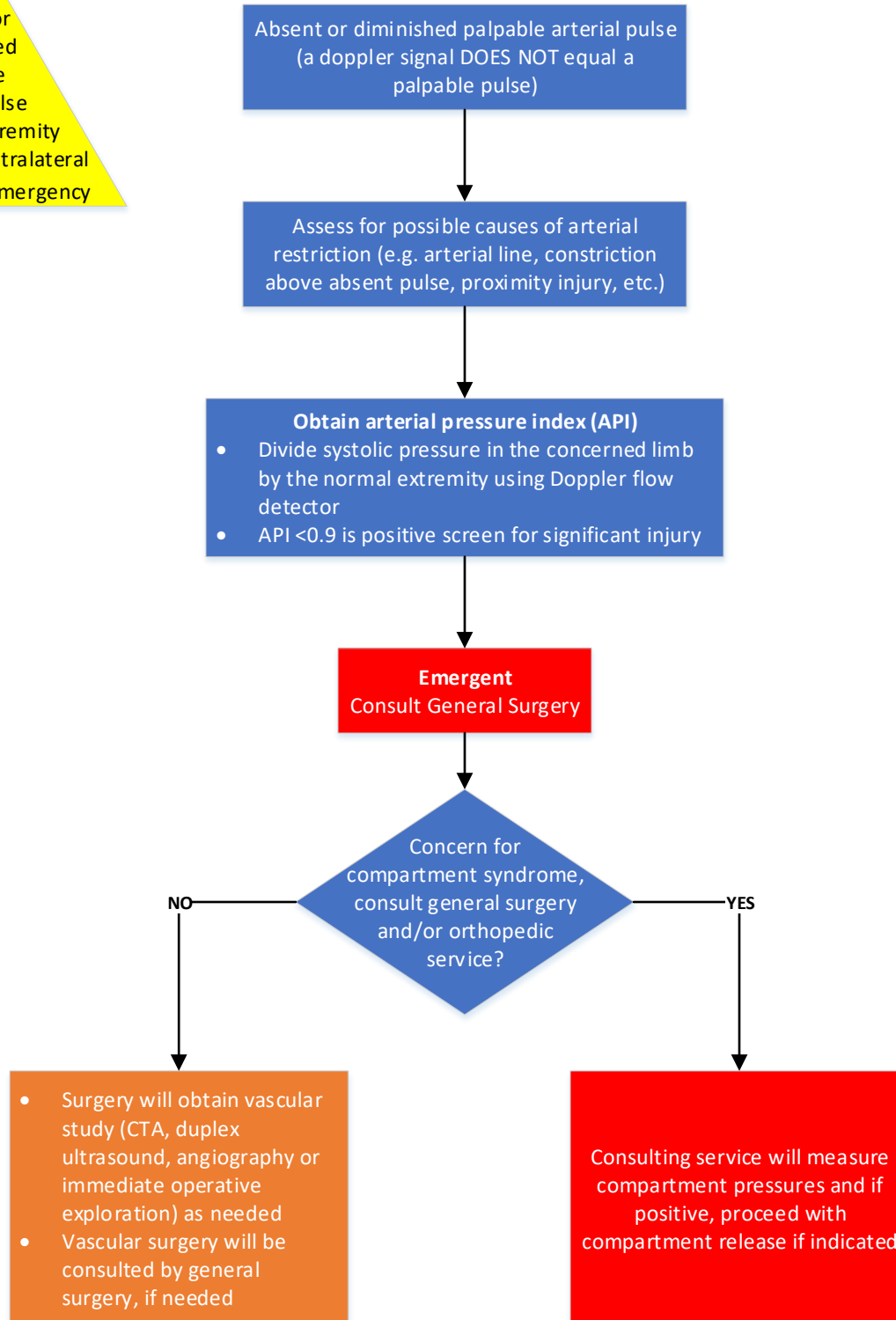
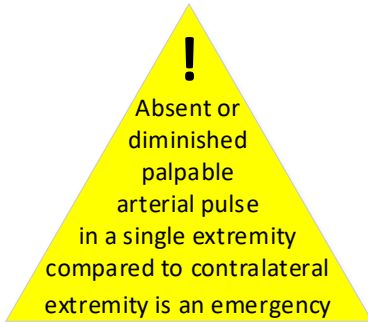


ACH Trauma Ischemic Extremity

Disclaimer: This clinical pathway is provided as a general guideline for use by Licensed Independent Provider's (LIPs) in planning care and treatment of patients. It is not intended to be and does not establish a standard of care. Each patient's care is individualized according to specific needs.



Revision Notes

- Trauma Council Approval: 10-1-20